

## CTNNB1(S45P)

**Catalog Number:** 26307

**Gene Symbol:** Beta-catenin, CTNNB, Catenin beta-1

**Description:** Anti-CTNNB1(S45P) Mouse Monoclonal Antibody

**Background:** CTNNB1 protein is a dual function protein. It is a subunit of a complex of proteins that from adherens junctions, which are important for the establishment and maintenance of epithelial cell layers by regulating cell growth and adhesion between adjacent cells. CTNNB1 protein also pulls double duty as an intracellular signal transducer in the Wnt signaling pathway. Mutations of CTNNB1 have been implicated in the pathogenesis of several cancers.

**Immunogen:** A synthetic peptide from the internal region of CTNNB1, which includes the mutation of S45P, human origin.

**Tested Applications:** ELISA, IF, IHC

**Recommended Dilutions:**

ELISA: 1:1000-1:2000

IF: 1:50-1:100

IHC: 1:50-1:100

**Concentration:** 1 mg/ml

**Host:** Mouse

**Clonality:** Monoclonal

**Isotype:** IgG

**Purity:** Purified from ascites

**Format:** Liquid

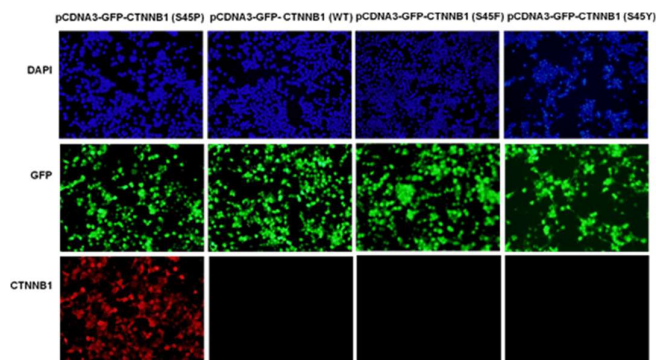
**Preservative:** No

**Constituents:** PBS (without Mg<sup>2+</sup> and Ca<sup>2+</sup>), pH7.4, 150 mM NaCl, 50% glycerol

**Species Reactivity:** Recognizes CTNNB1(S45P), but not wild type CTNNB1 protein from vertebrates.

**Storage Conditions:** Store at -20°C. Avoid repeated freezing and thawing

### Immunofluorescence:



### Immunofluorescence of cells expressing CTNNB1 proteins with anti-CTNNB1 (S45P) antibody.

HEK293T cells were transfected with pCDNA3-GFP-CTNNB1 (S45P) plasmid, pCDNA3-GFP-CTNNB1 (WT) plasmid, pCDNA3-GFP-CTNNB1 (S45F) plasmid or pCDNA3-GFP-CTNNB1 (S45Y) plasmid, then fixed and stained with anti-CTNNB1 (S45P) monoclonal antibody (Cat. # 26307).

FOR RESEARCH USE ONLY. NOT FOR DIAGNOSTIC APPLICATIONS